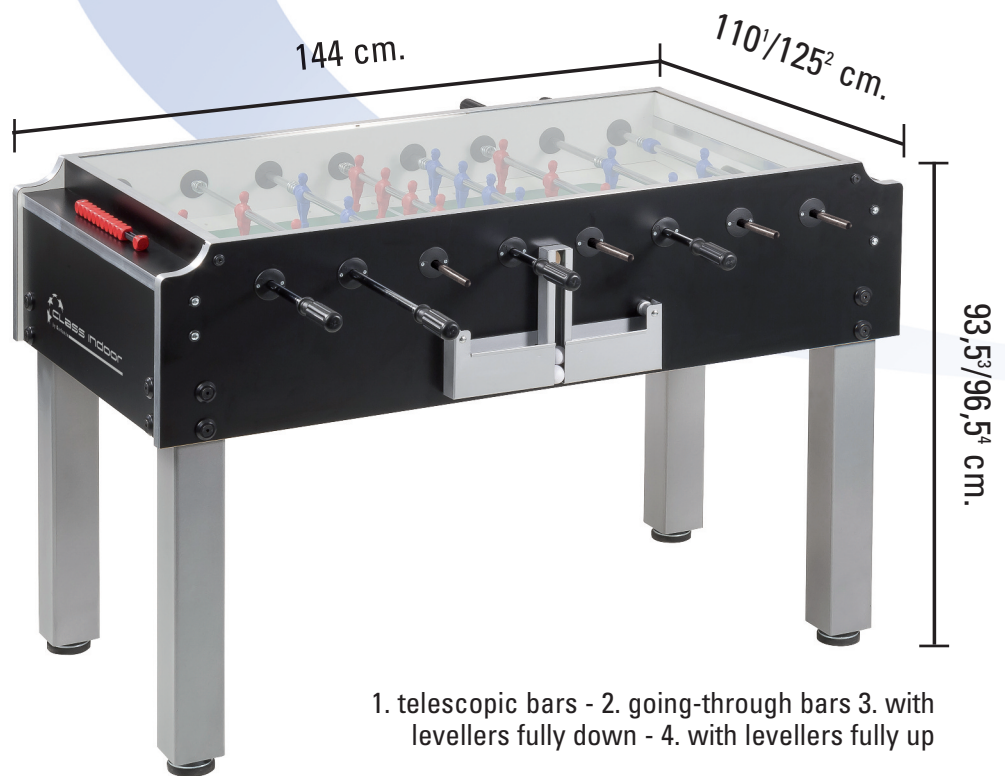
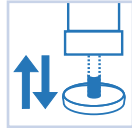
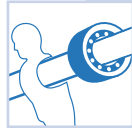
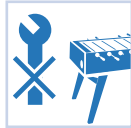
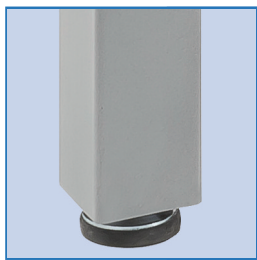




CLASS indoor

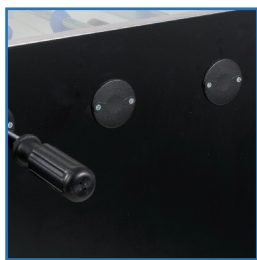


Garlando
Leader in pool and football tables



1

1. telescopic bars - 2. going-through bars 3. with levellers fully down - 4. with levellers fully up

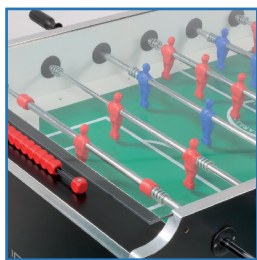


2

The first home line Garlando football table with a top glass. Balls remain inside the playfield area and cannot be lost or stolen if the table is available to a wide public, matches are quieter.

Red and blue players in unbreakable plastic moulded onto the bars.

Fully rotating (360 degrees) or non-rotating goalkeeper (180 degrees) on choice.



3

Heavy duty 25mm thick MDF cabinet with melamine coating. Colour: black with aluminium edges and logo.

Playing field in choice of tempered non-reflective sanded glass or plastic laminate. Green background with white lines to look like a football ground (fig.3).



4

9 x 9cm square metal legs coated with antiscratch silver powder-varnish. Levellers enable a perfectly flat playing field on uneven floors (fig.1).

The cabinet is fully covered by a tempered glass, which reduces the noise of the game and makes any game preventing the balls from coming out (fig.4).

2,2 mm thick high stress resistance steel bars coated with anti-rust chromium-plating (fig. 2).

Balls are introduced into the playing field manually through a conveyer (metal in silver colour) placed on the cabinet side.

On request 2,2mm thick telescopic safety bars to ensure the greatest safety.

Plastic handles with ergonomic grip.

Steel roller bearings to greatly improve the game speed, while reducing the stress for the players' wrists.

10 white Standard balls supplied.